

Spectrum® Thunder

Issued March 2003 • Index No. PC/13.0

**Air Plasma
Cutting and Gouging** 

Quick Specs

Industrial Applications

HVAC
Sheet Metal
Auto Body Repair
Home Hobby

Processes

Air Plasma Cutting and Gouging

Rated Output 12 A at 110 VDC, 35% Duty Cycle

Max. Open-Circuit Voltage 325 VDC

Weight 115 V Model Net: 43 lb (18 kg), Ship: 46 lb (20 kg)
230 V CE Model Net: 51 lb (23 kg), Ship: 54 lb (25 kg)

The Power of Blue.®

Portable for all your applications.

Spectrum® Thunder comes complete with built-in heavy-duty compressor and only weighs 43 lb, offering the operator a high level of portability and convenience.

Wide-range line-voltage capacity

provides excellent cutting capability from 98 volts to 132 volts (115 V \pm 15%). This makes it easy to cut even when your primary power drops or when extension cords are used.

Heavy-duty work clamp.

No high-frequency starts that can interfere with or damage controls or computers.

Constant Pilot Arc Control helps the operator maximize tip life by eliminating the need to restart the arc at the beginning of each new cut.



TRUE BLUE
3YR. WARRANTY

Power source warranted for three years.
Torch is warranted for one year.

Heavy-duty industrial built-in piston-driven compressor provides long life and superior airflow.

Constant output cutting power. The solid-state, constant-current design offers a consistent 12 amp cutting arc for continuous quality cutting up to 3/16 in steel.

35% duty cycle is tested at 40° C (104° F) to give you the cutting power whenever you need it. The duty cycle of any machine tends to increase as the temperature decreases. Miller rates its product in high temperature conditions to ensure the performance you expect, even in hot environments.

ICE-12C 20 ft (6.1 m) torch with patented trigger safety guard, is ergonomically built and includes drag tips for convenient cutting on all metals.

In-Rush Current Control Circuit protects the unit in case of wrong voltage hook-up or voltage overload.

Cutting Capability (Thickness to scale.)

MILD STEEL



Rated 1/8 in (3.2 mm)

Rated Cutting Capacity

10 inches per minute (minimum speed at which an operator achieves a smooth, steady cut using a hand-held torch).



Quality 3/16 in (4.2 mm)

Maximum Quality Cutting Capacity

Good-quality cut achieved at lower speeds.

MADE IN **USA**
APPLETON, WI **USA**



Miller Electric Mfg. Co.
An Illinois Tool Works Company
1635 West Spencer Street
Appleton, WI 54914 USA

International Headquarters
Phone: 920-735-4505
USA FAX: 920-735-4134
Canadian FAX: 920-735-4169
International FAX: 920-735-4125

Web Site
www.MillerWelds.com



Specifications (Subject to change without notice.)

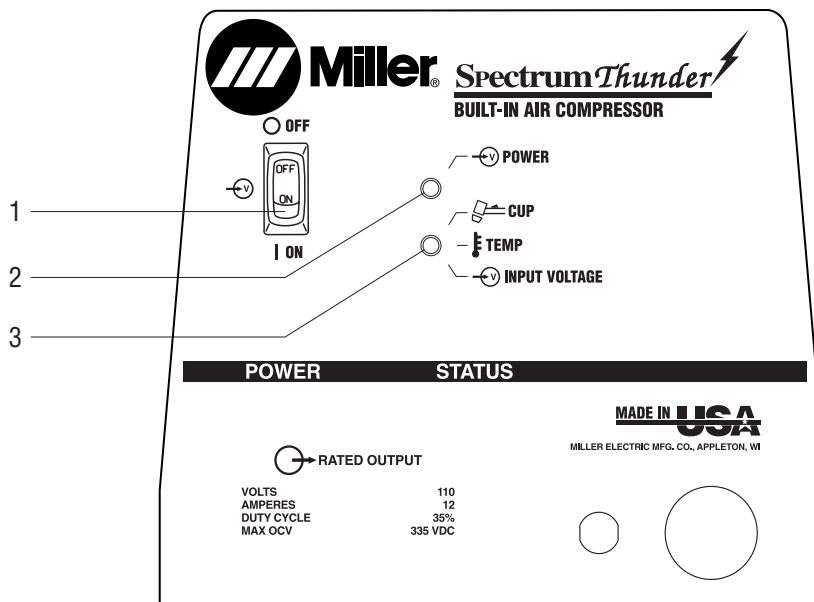
DC **1**
Phase

Model	Rated Output	Max. Open-Circuit Voltage	Amps Input at Rated Output, 1-Phase				Dimensions	Net Weight	Ship Weight
			120 V	230 V	KVA	KW			
115 V, 60 Hz*	12 A at 110 VDC	325 VDC	20	—	2.4	2.0	H: 16 in (406 mm) W: 8-1/2 in (216 mm) D: 16 in (406 mm)	43 lb (18 kg)	46 lb (20 kg)
230 V, 50/60 Hz**			—	10	2.3	1.9		51 lb (23 kg)	54 lb (25 kg)

* Certified by Canadian Standards Association to both Canadian and U.S. Standards. ** Conforms to European standards.

Control Panel

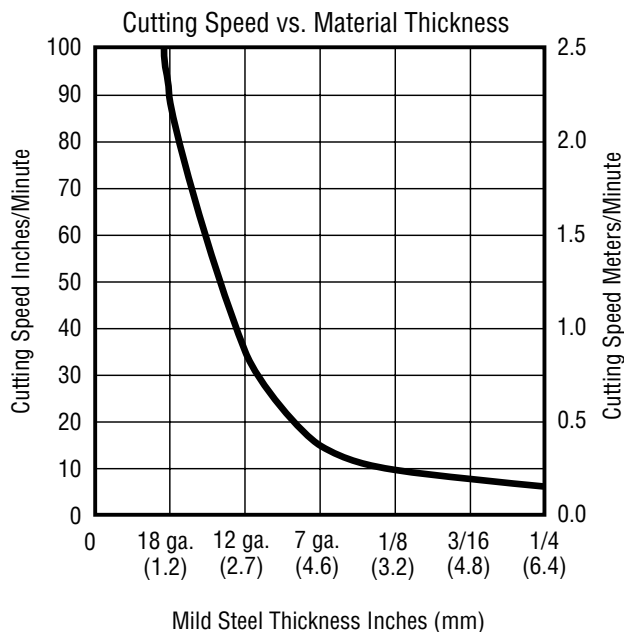
1. Power Switch
2. Power Light
3. Trouble Light



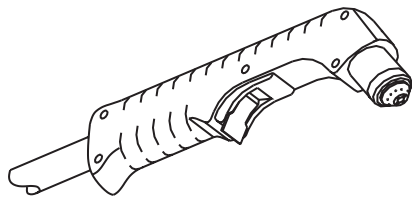
Cutting Performance

To determine the maximum rated cutting thickness of mild steel, follow the line from the 10 IPM (inches per minute) point on the cutting chart. The point at which this line intersects the cutting curve determines the maximum recommended production cutting thickness of the unit.

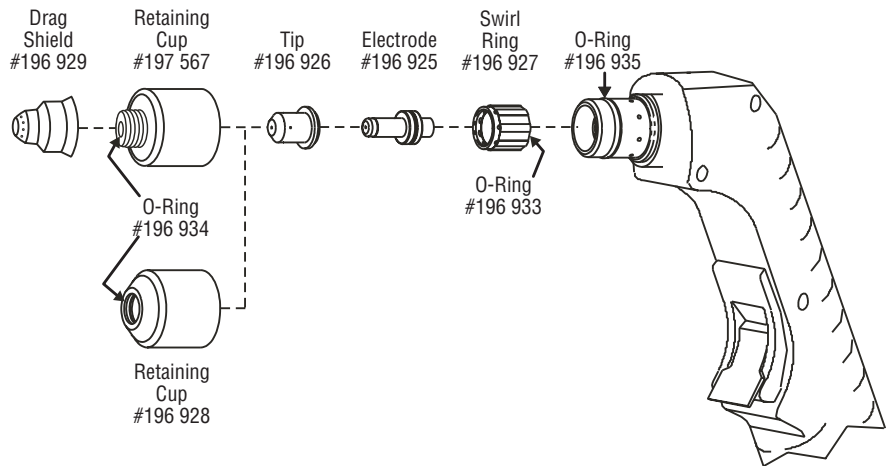
Note: The rating is based on 10 IPM because this is the minimum speed at which the operator achieves a smooth, steady cut when using a hand-held torch.



Replacement Torch and Consumables



ICE-12C Hand-held Torch
#196 923 20 ft (6.1 m)



Genuine Miller Options and Accessories

Cable Cover

#118 678 30 ft (9 m) torch
Protects hose and cables. Features nonconductive zipper and is easily removed if necessary.



Plastic Consumables Box with Compartments #127 493

For storing additional parts and accessories.



Standoff Roller Guide #194 883

Helps maintain recommended standoff distance when using extended consumables.



No. 30A Economy Cart with Cord Wrap #195 093

This economical running gear includes a cord wrap and provides mobility with an angle for easy front panel access and extra storage space.



Protective Cover #195 144

Attractive, mildew-resistant, odor-free, waterproof cover protects your machine's finish.



Plasma Circle-Cutting Guide

#195 981 ICE-12C, 25C, 50C, 55C, 80C
Cut straight lines or circles up to 12 in diameter with ease.



Suction/Magnetic Pivot Base #195 979

Add this to your cutting guide for convenient attachment to all flat surfaces. The extended arm accommodates holes up to 30 in diameter.

Ordering Information

Equipment and Options	Stock No.	Description	Qty.	Price
Spectrum® Thunder <i>Note: Each Spectrum unit includes ICE-12C, 20 ft (6.1 m) hand-held torch and extra consumables (2 standard electrodes, 2 standard tips).</i>	#903 741 #903 742	Single-phase, 115 VAC, 60 Hz Single-phase, 230 VAC, 50/60 Hz, CE <i>(Note: 230 V unit does not include plug.)</i>		
Accessories				
Cable Cover	#118 678	30 ft (9 m) torch		
Consumables Box w/Compartments	#127 493			
Standoff Roller Guide	#194 883			
No. 30A Economy Cart with Cord Wrap	#195 093			
Plasma Circle-Cutting Guide	#195 981	For ICE-12C, 25C, 50C, 55C, 80C		
Suction/Magnetic Pivot Base	#195 979			
Protective Cover	#195 144			

Date:

Total Quoted Price:



Distributed by: